

Mobility Tech Asia 2026 Hong Kong Pavilion



Hall 1 Booth G-B 1
1-3 July 2026
Queen Sirikit National Convention Center
(QSNCC)

Organiser:

Implementation Agent:

Funded by Trade and Industrial Organisation Support Fund,
Trade and Industry Department



工商機構支援基金

Trade and Industrial Organisation Support Fund

Any opinions, findings, conclusions or recommendations expressed in this material/event (or by members of the project team) do not reflect the views of the Government of the Hong Kong Special Administrative Region or the Vetting Committee of the Trade and Industrial Organisation Support Fund.

Contents

- 01 **A&P Instrument**
- 02 **Able Trillion Technology Co., Limited**
- 03 **AI Cities Limited**
- 04 **Alpha AI Technology Limited**
- 05 **Anlyvis Limited**
- 06 **Castle Peak Innovations Ltd.**
- 07 **Chang Feng Group Co Limited**
- 08 **Hong Kong EV Power Limited**
- 09 **Hongrita Plastics Limited**
- 10 **Innocorn Technology Limited**
- 11 **MapKing International Limited**
- 12 **Marsbu Group Limited**
- 13 **Mingshang Technology (HongKong) Co., Limited**
- 14 **Predicx Technology Company Limited**
- 15 **Profit Sky International Industrial Limited**
- 16 **Refined Motor Company Limited**
- 17 **SOCIF Limited**
- 18 **UISEE Technologies (Hong Kong) Limited**
- 19 **WildFaces Technology Limited**
- 20 **Yee Fung Technology Limited**

A&P Instrument

Company website: <http://www.anp.com.hk>

Contact no.: (+852) 2755 6578

Email address: info@anp.com.hk

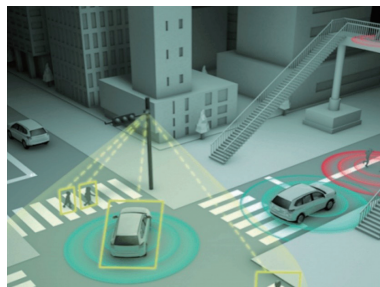
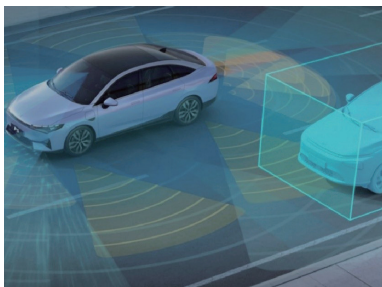
Address: Rm68, 1/F, Sino Ind Plaza, 9 Kai Cheung Road, Kln Bay, Hong Kong

Company introduction

Founded in 1984 in Hong Kong, A&P Instrument operates as a global supply chain service provider with a strong foundation in China. Our mission is to learn and introduce the latest overseas products and technologies to China, offering localized professional services to help Chinese clients enhance the value of their products. At the same time, we promote high-quality "Made in China" resources to global users.

Product / Service information

A&P Instrument provides 2D and 3D LiDAR systems based on TOF (Time of Flight), FMCW (Frequency Modulated Continuous Wave), and FLASH technologies to meet the development needs of mobile robots and AI across various applications. Additionally, we offer positioning and orientation units that deliver continuous and stable output of pose information, supporting the agile development of a wide range of mobile robotic systems.





佳兆科技有限公司
Able Trillion Technology Co., Ltd.

Able Trillion Technology Co., Limited

Company website: www.abletrillion.com

Contact no.: (+852) 9095 2706

Email address: eric.chiu@abletrillion.com

Address: Unit 203, 2/F, Building 19W, Hong Kong Science Park, Hong Kong.

Company introduction

The mission of Able Trillion Holdings is always people-oriented and health-oriented! In the fields of Environmental, Technology, BioTech, Medical care, Green Energy IVD, AI and LLM, etc., we explore the combination of world-leading technology, equipment and professional services to create quantifiable green technologies. A healthy and low-carbon living space will benefit mankind and create a Smart City with Big Data.

Product / Service information



EV Charger



Methanol to Hydrogen



AI Cities

AI Cities Limited

Company website: www.ai-city.io

Contact no.: (+852) 2544 7680

Email address: info@ai-cities.biz

Address: Room 707, 7/F, Shui Hing Centre, 13 Sheung Yuet Road,
Kowloon Bay, Hong Kong

Company introduction

AI Cities Ltd focus in the application of artificial intelligence, robot and robotic vehicles, connected vehicles technologies and other smart city applications development.

AI Cities Ltd analyzes how autonomous driving reshapes city-scale mobility and smart transit. We supply robots and robotic vehicles, and provide services in building the technology eco-system including intelligent traffic information system, high-definition maps, connected vehicles services and services and support systems. Core solutions include ours and partners driverless vehicles, AI-powered traffic management to enhance safety and reliability, robots and we provide consultancy services advise on policy, data sharing, and liability frameworks evolve. We examines urban planning implications, parking, last-mile connectivity, and the broader ecosystem, including V2X, cloud-edge architectures, and data governance. We also advise on economics of fleets, business models, and incentives, plus ethics, accessibility, privacy, and public acceptance.

Alpha AI Technology Limited

Company website: www.alphaiauto.com

Contact no.: (+852)9460 5454

Email address: desmond@alphaiauto.com

Address: 1006D, 10/F, CTF Life Tower, 18 Sheung Yuet Road, Kowloon Bay, Kowloon, Hong Kong

Company introduction

We are a Hong Kong-based AI technology startup specializing in computer vision, edge AI, and automated visual inspection solutions for urban infrastructure, property management, and mobility-related applications. Our team has experience developing AI-powered vehicle damage inspection systems and has expanded its capabilities into drone-based AI inspection and CCTV video analytics. By combining image recognition, defect detection, and intelligent monitoring, we help organizations improve inspection efficiency, reduce manual workload, and identify safety risks or abnormalities in a more scalable and data-driven way.

Product / Service information

Our solutions cover three key AI visual inspection areas: drone AI inspection, CCTV AI analytics, and vehicle damage AI inspection. The drone AI inspection platform supports automated analysis of building facades, rooftops, construction sites, and infrastructure assets, helping detect cracks, defects, water leakage, corrosion, and other abnormalities. Our CCTV AI analytics solution enables intelligent monitoring for people flow, restricted area intrusion, PPE detection, safety compliance, and abnormal event alerts. We also provide vehicle damage AI inspection, which identifies damage locations and damage types from vehicle photos to support insurance claims, car rental operations, fleet management, and repair workflows. These solutions help businesses digitize inspection processes and make faster, more objective decisions.



Image Inspection



Our AI model can highlight each individual scratch damage

Damage Recognition



Our AI model can detect tiny damages that a human may miss


Car Analysis Report

Registration Mark: AB5678
V.I.N: ABC1D23456E78900

4 Damaged Parts Detected

#	Damage Type	Region
1	Scratch	Rear Fender
2	Scratch	Rear Fender
3	Dent	Rear Door
4	Dent	Rear Door

Total Estimated Price: \$12,000



1 Minute
HK Patent



Anlyvis Limited

Company website: <https://anlyvis.fun>

Contact no.: (+852) 9525 9196

Email address: normanlam@anlyvis.fun

Address: Flexi-Space 189 @ Smart Space Smart Living, 6/F, Core C, Cyberport 3, 100 Cyberport Road, Hong Kong

Company introduction

Anlyvis Limited empowers cities and enterprises to unlock visual intelligence from their existing cameras and sensors, enabling safer, smarter, and more sustainable operations. The company delivers an Edge AIoT platform and solutions that automatically analyse safety hazards, mobility patterns, and operational dynamics in real time. By processing data at the edge instead of relying solely on the cloud, Anlyvis helps clients reduce latency, protect data ownership, and deploy AI in challenging environments. The team has supported organisations across sectors including transport, public safety, healthcare, industrial facilities, logistics, retail, and property management, with deployments spanning multiple regions. Incubated at a leading innovation hub, Anlyvis focuses on worker empowerment, privacy-preserving design, and socially conscious development, aligning its solutions with international sustainability and smart-city objectives.

Product / Service information

Anlyvis provides an all-in-one Edge AI visual intelligence solution that turns video streams into real-time, actionable insights for operations and planning. Its AI-OS integration system is a modular package that captures and processes data on the edge, ensuring resilient, low-latency performance under all network conditions. Pre-installed models such as people/vehicle/object counting, crowd density, trespass, motion and gesture detection, object and speed detection, fire and smoke, and text/numeric recognition allow rapid deployment. These can be extended with customised models to address advanced or domain-specific requirements across traffic management, crowd safety, anomaly detection, physical asset protection, and logistics and transportation. Services include solution design, integration with existing monitoring systems, dashboard and alert configuration, and ongoing optimisation. Anlyvis also builds responsible AI frameworks around workforce empowerment, data ownership, and sustainable development, helping clients deploy AI ethically while achieving measurable improvements in safety, efficiency, and service quality.



Castle Peak Innovations Ltd.

Company website: <https://www.castlepeakinno.com/>

Contact no.: (+852) 9656 4794

Email address: hello@castlepeakinno.com

Address: Unit A13 16/F ,Wah Wan Industrial Centre,
No.2 Kin Fat Ln Tuen Mun, NT, Hong Kong.

Company introduction

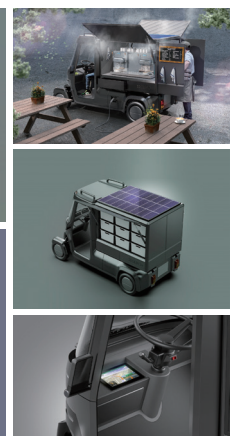
Castle Peak Innovations is a forward-thinking product innovation lab based in Hong Kong, established in 2023. The company specializes in the development of cutting-edge electric trikes and quad bikes tailored for last-mile delivery and mobile retail applications.

Backed by a team of experienced designers and engineers, Castle Peak Innovations brings together decades of expertise across industrial design, engineering, ESG strategy, and product development. We are committed to delivering innovative, modular, and sustainable micro-mobility solutions that empower individuals and businesses to operate flexibly in dynamic urban environments. Our flagship product, the electric QUAD+, exemplifies our mission to reshape the future of last-mile mobility through smart design and clean technology.

Product / Service information

Project QUAD+ is a next-generation solution for multi-functional micro quad for last miles and street vendors that run on electricity. The project aims to design an affordable and modular quad along with a delivery solution for individuals or companies to enable them to easily delivery, sell food and other goods on the go.

Our project incorporates a tracking device that communicates with a mobile app, which will allow customers to locate nearby street vendors quickly and easily.



Chang Feng Group Co Limited

Company website: www.dfjm.cn

Email address: sales-002@dfjm.cn

Address: Unit 17, 9/F., Tower A, New Mandarin Plaza,
No.14 Science Museum Road, Tsim Sha Tsui, Kowloon, Hong Kong

Company introduction

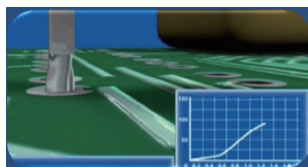
Chang Feng Group is dedicated to the research, development, and manufacturing of automotive internet solutions, new energy technologies, BCM, ECU, ABS, IBS, EPB, ADAS (ultrasonic radar, millimeter-wave radar), ADAS cameras, and AI data storage connector solutions.

The company has obtained international certifications including IATF 16949, ISO 9001, ISO 14001, and ISO 45001. It holds the National High-Tech Enterprise Certificate and the Specialized, Refined, Distinctive, and Innovative Enterprise certification, with over 40 patents accumulated. Chang Feng has supplied billions of sets of high-performance precision connectors to customers.

Product / Service information



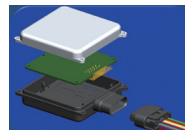
厚度 Press-fit Thickness	材料 Alloy Options	导电率 Conductivity (ACS)	PCB板孔 Nominal PCB Hole Size
0.4mm-0.8mm	磷青铜 Phosphor Bronze	13%to15%	*1.020mm
0.4mm-0.8mm	锡黄铜 Tinned Brass	25%to30%	*1.020mm
0.4mm-0.8mm	磷青铜 Phosphor Bronze	13%to15%	*1.020mm
0.4mm-0.8mm	锡黄铜 Tinned Brass	25%to30%	*1.020mm



Chang Feng Group's solderless technology design and testing meet automotive connection testing standards (based on international standards such as IEC, EIA, and SAE).

IPC-9797 patented, with 80% of the company's products incorporating solderless technology.

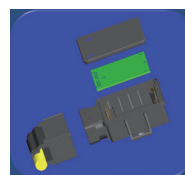
1. Press-fit product designs are available in three thickness specifications: 0.4mm, 0.64mm, and 0.8mm.
2. Compatible with various PCB plating processes.



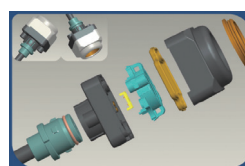
77G/79G Millimeter-Wave Radar



IBS Smart Brake Control
Module Customization
(No Soldering Required)



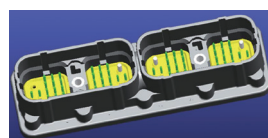
EPB Electronic Power Brake Control
Module Customization (Solderless)



ADAS Camera Connection Solution



ADAS Camera Connection Solution



Hybrid bass motor connection scheme



EV POWER

Hong Kong EV Power Limited

Company website: www.hkevpower.com

Contact no.: (+852) 3695 0396

Email address: contact@hkevpower.com

Address: Unit 805-806, 8/F, Building 12W, No.12 Science Park West Avenue,
Hong Kong Science Park Phase 3, Shatin, N.T., Hong Kong

Company introduction

Hong Kong EV Power Limited is a leading EV charging service provider in Hong Kong, operating the city's largest charging network with 170+ public charging stations and over 2,300 charging piles across the territory.

We deliver truly end-to-end charging solutions—spanning hardware, installation, operations, and intelligent software platforms that enable the future of sustainable mobility. As Hong Kong accelerates toward electrification, we are committed to offering comprehensive services and a seamless charging experience for every EV user.

Product / Service information

Our EV charger portfolio spans from 7–21 kW AC chargers to high-power DC fast chargers delivering up to 600 kW. Designed for performance, reliability, and energy efficiency, each model is built with advanced smart features that support seamless operation. This makes our chargers ideal for a wide range of scenarios—from home charging environments to public car parks with high operational demand.



Hongrita Plastics Limited

Company website: www.hongrita.com

Contact no.: (+852) 2389 5193

Email address: ericlee@hongrita.com

Address: No. 701, 7/F., Kwong Sang Hong Centre, 151-153 Hoi Bun Road, Kwun Tong, Kowloon, Hong Kong

Company introduction

Since the foundation of Hongrita in Hong Kong in 1988 and its subsequent expansion into an enterprise based in Hong Kong, Guangdong-Kong Kong-Macao Greater Bay Area, Southeast Asia and even the world. The company keeps pursuing superb technology, cutting-edge equipment, efficient team, and quality service, committed to provide a full range of plastic products solutions for customers at home and abroad. The company provides one-stop service from product design, mold making, injection production, to secondary processing, automatic assembly, the service covers Automotive, Industrial Application, Medical, Health care, 3C& Smart Tech, mother and baby care, packaging products, etc.

Hongrita has continuously strived to improve its standards on business management and product quality management. The implementation of the SAP Enterprise Resource Planning (ERP), Manufacturing Execution System(MES), Digital Management System(DMS) and the accreditation of different ISO certificates.

Product / Service information



Sealing element
Cavity number : 8+8
Cycle time : 24S
Material: PA6 15GF + TPV

RLS 3K Housing; Adjust the wiper speed according to the size of rainfall, by judging the current sunshine intensity, fine adjustment of the car temperature, adjust the panel display brightness according to the environment illuminance ;



Cavity number : 4+4+4
Cycle time : 24S
Material : PC + PC + PC

2K and 3K part



Button
Cavity number : 4+4/4+4+4
Cycle time : 35S
Material: PC+PC+ABS
The final product needs plating



Rotary Knob
Cavity number : 4+4/4+4+4
Cycle time : 35S
Material : PC+ABS +TPV
The final product needs plating

Accelerator pedal & key



Cavity number : 2/4/8
Cycle time : 25~55S
Material : PA66 40GF/
PC+ABS/
PA12

Innocorn Technology Limited

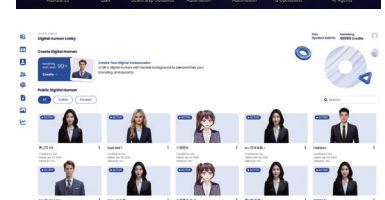
Company website: <https://www.innocorn.com>
 Contact no.: (+852) 3466 2531
 Email address: info@innocorn.com
 Address: Unit 2202, 22/F, Causeway Bay Plaza 1,
 489 Hennessy Road, Causeway Bay

Company introduction

Innocorn Technology provides enterprise-ready AI solutions that help car and mobility businesses improve service efficiency and customer experience. Innocorn focuses on generative AI digital human technologies, including lifelike AI digital avatars, conversational AI for customer support and concierge-style guidance, AI phone voicebots, and OCR-enabled automation for data extraction and form-filling. These capabilities support human-machine interaction and can be applied to car-related workflows such as 24/7 vehicle and service inquiries, booking and route guidance, instant answers to maintenance and warranty questions, and assisting customers with registration and required information. Kimiyi AI complements this with a no-code platform for creating, managing, and deploying AI Employee agents, supporting roles like customer service, sales assistants, office support, and corporate training. Together, we enable scalable, secure, and customizable deployments—helping mobility and automotive companies reduce repetitive workload, increase conversion, and deliver measurable business outcomes.

Product / Service information

- **AI Digital Avatars (Car/Mobility Customer Assistants):** 24/7 lifelike agents that answer vehicle and service questions, guide users to the right solutions, and provide real-time support.
- **AI Chatbots (Car Sales & Service Q&A):** automated conversation for car model info, pricing, availability, warranty/maintenance guidance, and appointment pre-qualification.
- **AI Concierge (Dealership & Mobility Guidance):** in-venue digital concierge for showrooms, test-drive booking, route/parking directions, and end-to-end user flow support.
- **AI Phone Voicebots (After-sales & Call Automation):** automate incoming calls for service booking, repair status, FAQ handling, and follow-up scheduling with natural voice interactions.
- **AI Receipt Scan / AI OCR Program (Document & Form Automation):** OCR-based extraction for customer documents, insurance/claim data, and service forms to reduce manual paperwork.
- **AI Service Robots (On-site Human-Machine Interaction):** robot-assisted assistance in vehicle service areas to guide customers, distribute info, and support operational workflows.
- **AI Employees Web Platform (Create & Manage Mobility AI Agents):** web platform to build and deploy AI Employees for roles across car dealers, workshops, fleet services, and mobility programs.





MapKing International Limited

Company website: <https://www.mapking.com/>

Contact no.: (+852) 2740 9680

Email address: sales@mapking.com

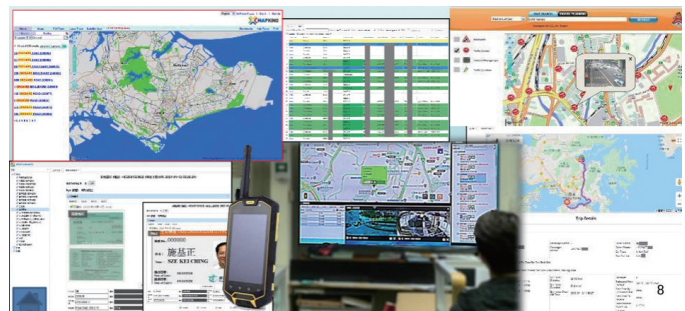
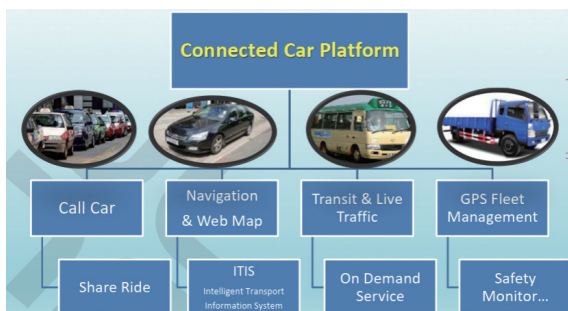
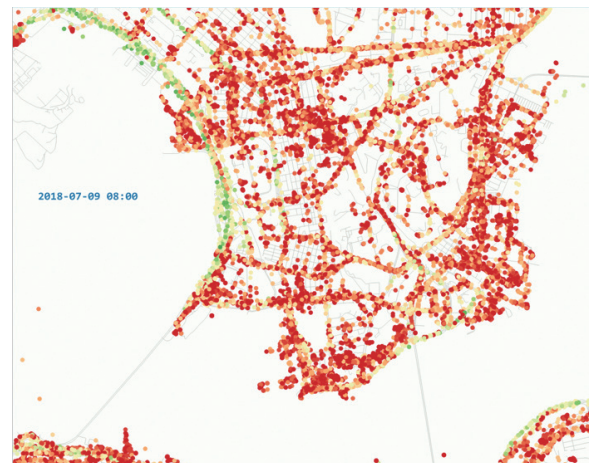
Address: Unit 707, 7/F, Shui Hing Centre, 13 Sheung Yuet Rd,
Kln. Bay, Hong Kong

Company introduction

MapKing International Limited is a leading connected vehicles and smart city services company. We serve several BigTechs in the region and have offices in major cities in Asia. Our smart city services are focused on Connected Vehicles, Fleet Management, e-Hailing, Big Data & AI, Metaverse, Street View, VR, Digital Twin & Drone, Map & Search, intelligent applications in transport, construction, conservation, hotel & mall design, town planning and consultancy services. Our brands include MapKing, MapAsia, GPSHongKong, SmartCityOnline.biz, Fleet-Management.OnLine, eTaxi, GoAsia etc.

Product / Service information

“City Brain” is an advanced connected city platform that provides sophisticated but “ready-to-use” management system to support companies and governments in modern city. Our City Brain Platform provides cloud based services including, but not limit to, GPS fleet management, vehicle services, e-hailing, Intelligent Traffic Information System (ITIS), connected vehicles, smart building/ hotel design & management, smart sensors to facilities (IoT), CCTV, etc. MapKing’s “City Brain” integrates the various platform adopted in different operational projects via API and Virtual city. “City Brain” response lively to the need of a modern city.



Marsbu Group Limited

Company website: www.marsbu.com

Contact no.: (+852) 6736 6586

Email address: harris.fung@marsbu.com

Address: Room B, 31/F, Boton Technology Innovation Tower,
368 Kwun Tong Road, Kwun Tong, Hong Kong

Company introduction

MARSBU – Your Smart Charging Partner

MARSBU specializes in EV charging solutions, delivering end-to-end services for residential, commercial and corporate clients. We integrate product R&D, system design, professional installation and smart management to build efficient charging networks.

Our Services:

- Charging Equipment: Home & commercial chargers with fast charging capability
- Custom Solutions: Tailored designs for various scenarios
- B2B Services: Comprehensive partnerships for businesses
- Consumer Solutions: Smart app for seamless charging experience

Driven by innovation, MARSBU is committed to advancing green mobility.

Product / Service information

MARSBU - Professional EV Charging Solutions Provider

MARSBU delivers comprehensive EV charging products and services for residential, commercial and public applications. Our product range features smart AC chargers (7kW-22kW) and DC fast chargers (60kW-180kW), all internationally certified and compatible with major EV brands.

Key Features:

- Customized Solutions: Tailored designs for residential complexes, commercial hubs and corporate campuses
- Turnkey Installation: Certified engineers provide end-to-end service from site assessment to commissioning
- Smart Management Platform: Cloud-based system with remote monitoring, diagnostics and payment functions
- Flexible Business Models: Equipment procurement and operation management options for property owners

Committed to advancing green mobility through technological innovation and dependable services.



Mingshang Technology (HongKong) Co., Limited

Company website: www.mingshang.com

Email address: Avaqiu@mingshang.com

Address: Room 605, 6/F, Garden Commercial Building,
75-77 Garden Street, Mongkok, Kowloon, Hong Kong

Company introduction

Mingshang Technology has been deeply engaged in the field of intelligent driving of commercial vehicles for 20 years, and is committed to becoming the world's leading commercial vehicle intelligent driving technology enterprise. The company focuses on commercial vehicle intelligent terminal, intelligent cockpit, intelligent driving, intelligent network connection field, to provide global customers with digital intelligence, information, network technology base. Products are widely used in large-scale logistics, engineering machinery, truck and bus manufacturing, ports, mines, intelligent transportation and other fields. It is a national high-tech enterprise and a national specialized new "little giant" enterprise. The company provides diversified services to customers worldwide with expertise in R & D design, quality management and intelligent manufacturing. At present, it has established good cooperative relations with more than 100 customers around the world, such as BYD, Dongfeng commercial vehicle, Yutong bus, Sany heavy industry, Caterpillar, Longma sanitation, Iveco, Ford, Jianghuai Automobile and so on.

Product / Service information

MINGSHANG is one of China's leading suppliers and manufacturers for IVI system, DMS (driver monitoring system), ADAS, and BSD (blind spot detection), 360° Surround View System, Mobileye products, Camera Systems, and Mobile DVR for:

- Commercial and school buses
- Rv's and motorhomes
- Industrial & construction equipment
- Cargo and delivery vans
- Trucks and semi-trailers
- Agricultural vehicles & equipment
- Pickup trucks and tow trucks
- Fire, Waste & Recycling, Military and more

MINGSHANG has over 19 years experience in designing and developing visual safety systems for eliminating blind spots around vehicles, to reduce accident hazards, and ensure vehicle driving safety.



Predicx Technology Company Limited

Contact no.: (+852) 5422 6911
 Email address: info@aimotionsports.com
 Address: FLAT/RM J, 22/F, BLOCK 3, THE ARLES,
 1 AU PUI WAN STREET, FO TAN, SHA TIN, N.T.

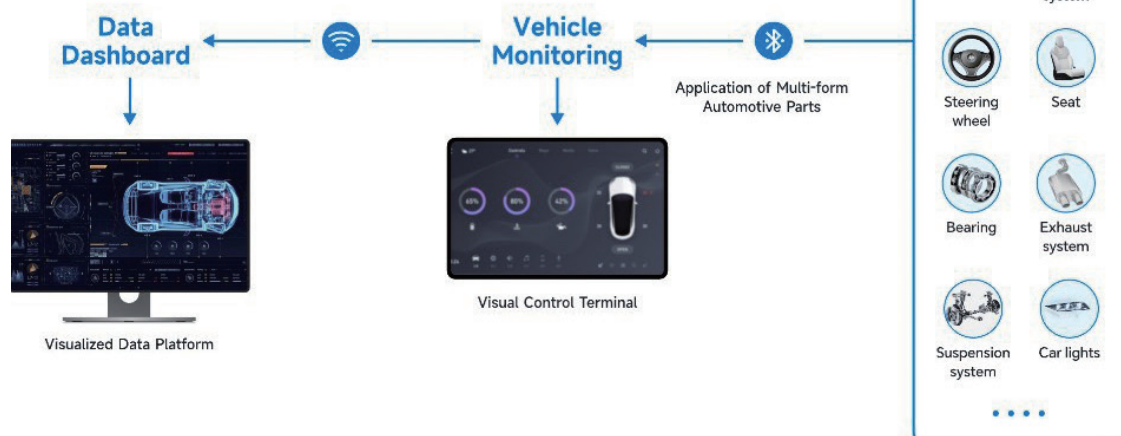
Company introduction

AI MOTION specialized in IoT and connected vehicle technologies. With core strengths in MEMS sensors, multi-sensor fusion and intelligent algorithms, we provide real-time monitoring solutions for automotive components. Our system enables full-coverage, real-time status detection of key vehicle parts, supported by a visual control terminal and cloud-based data platform. We deliver precise data analysis, fault early warning and efficient operation management, empowering smart connected vehicles and fleet digital upgrading for the future mobility ecosystem.

Product / Service information

AI MOTION focus on intelligent IoT solutions for connected vehicles. Leveraging MEMS and multi-sensor technologies, we establish a real-time monitoring system for key automotive components. Our visual control terminal and cloud data platform enable precise data collection, intelligent analysis and fault early warning, providing safe, efficient digital support for smart vehicles and fleet operation management.

Solution: Mechanical Failure and Aging Monitoring Platform Based on Wireless Inertial Measurement Units (WIMUs)





Profit Sky International Industrial Limited

Company website: <https://ps-lts.com/>

Contact no.: (+852) 9505 6090

Email address: info@ps-lts.com

Address: Unit A, 11/F, Seabright Plaza, 9-23 Shell Street, Fortress Hill, Hong Kong

Company introduction

Profit Sky International Industrial Limited has been deeply involved in the logistics equipment field since 2011. With an early start and extensive industry experience, it is a national high-tech enterprise and a “specialised, refined and innovative” enterprise. Its dual core advantages lie in “core equipment production + intelligent system integration”, focusing on the intelligent upgrading of logistics scenarios.

The company has established a complete “R&D + production + service” chain: pre-sales technical support centers in Hong Kong, Shenzhen, and Guangzhou; a project implementation and R&D center in Shanghai, with over 100 technical personnel ensuring technological innovation; and two large production bases in Xuancheng, Anhui, enabling the self-development and production of core equipment such as intelligent shelving and multi-passenger vehicles, with full-process quality control. It also possesses strong intelligent system integration capabilities, capable of integrating warehousing equipment with cloud management systems to provide integrated “equipment + system” implementation services.

Product / Service information

Automatic Mobile Robot (AMR) is a smart device that integrates navigation and sensing technologies. It can move freely in environments without human operation or track constraints, and flexibly complete material handling tasks. AMRs use LiDAR and SLAM technology to perceive their surroundings and avoid obstacles, significantly enhancing operational safety and efficiency. They are widely applied in industries such as automotive, pharmaceutical, pan-3C, logistics, etc, helping businesses upgrade their automation, reduce labor costs, and minimise errors, making them an essential tool for future smart factories.



Refined Motor Company Limited



Company website: www.refinedmotor.com

Contact no.: (+852) 9172 2840

Email address: info@refinedmotor.com

Address: DD119LOT980, Pak Sha Tsuen, Yuen Long NT, Hong Kong

Company introduction

Refined Motor Co is a top-tier vehicle electrification conversion specialist in Hong Kong, focusing on petrol-to-electric upgrades for classic cars and commercial vehicles. We independently develop VCUs and modular battery packs, retaining original vintage styling while delivering premium electric driving performance.

Electrifying existing vehicles reduces carbon footprint by 60% compared to buying brand-new electric cars, offering outstanding environmental benefits. With a manufacturing base in Yuen Long, we partner with local universities and the microelectronics ecosystem for R&D and OEM services. Committed to green sustainable mobility, we provide compliant EV conversion, vehicle restoration and bespoke solutions, serving Hong Kong and global markets as a benchmark leader in high-end vehicle electrification.

Product / Service information

Refined Motor Co specialises in petrol-to-electric conversion for classic and commercial vehicles. All core three-electric systems, VCU controllers and modular battery packs are fully developed in-house, with complete independent research, design and system integration, free from reliance on external ready-made solutions.

All electrification solutions are researched, developed and manufactured entirely in Hong Kong at our Yuen Long facility, leveraging local academic research and microelectronics industry resources.

Our conversion lead time is shorter than overseas competitors. We provide regulatory-compliant EV conversion, classic vehicle restoration, custom powertrain tuning and professional OEM services, preserving original vintage styling while delivering stable, dependable all-electric driving performance.



SOCiF Limited

Company website: <https://www.socif.co/>

Contact no.: (+852) 9664 9906

Email address: jason.yuen@socif.co

Address: Unit 527, 5/F, 5W Enterprise Place,
Phase 1 Hong Kong Science Park, Pak Shek Kok, NT, HK

Company introduction

SOCiF builds easy-to-use AI products that make roads safer. Our AI Driver Safety System watches the driver with a camera and uses smart software to spot distraction, drowsiness, and risky driving. It gives real-time alerts and can connect to the vehicle to help avoid accidents.

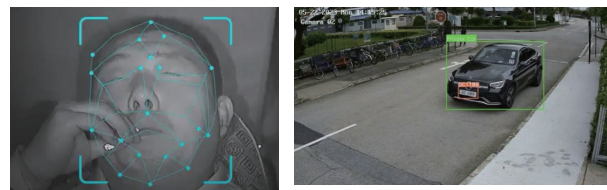
We also offer an edge-based AI video analytics system that runs directly on cameras or local devices. It detects and tracks people, cyclists, and vehicles quickly and privately, without sending all video to the cloud. This lowers delays and saves bandwidth. The system works in different lighting and weather conditions and only sends important event data when needed.

SOCiF's solutions are modular and can be used in cars, fleet vehicles, roadside units, and city infrastructure. With simple APIs and dashboards, fleet operators and city planners can monitor safety and act faster. SOCiF focuses on reliable, practical AI for safer mobility.

Product / Service information

SOCiF presents two compact safety products designed for real-world deployment. The AI Driver Safety System uses an in-cabin camera and on-device deep learning to monitor driver behavior in real time. It detects distraction, drowsiness, phone use, and unsafe maneuvers, then issues audible/visual alerts and can trigger vehicle integrations to reduce risk. The system runs offline for privacy, adapts to lighting changes, and logs events for fleet review.

The Edge AI Video Analytics platform processes roadside and vehicle camera feeds locally to detect and track people, cyclists, and vehicles with low latency. By sending only event metadata instead of full video, it saves bandwidth and preserves privacy. Built for varied weather and lighting, the platform supports scalable deployment on cameras, edge gateways, and roadside units, and offers APIs and dashboards for operators. Together, these products enable proactive, privacy-conscious safety monitoring for fleets and smart cities.



UISEE Technologies (Hong Kong) Limited

Company website: <https://www.uisee.com/>

Contact no.: (+852) 2735 7399

Email address: pr@uisee.com

Address: Shop Nos. 202-203, 2nd Floor, Regal Airport Hotel,
9 Cheong Tat road, Chek Lap Kok, Hong Kong

Company introduction

As a leading autonomous driving company in China, UISEE is committed to providing AI driving service for all industries and all scenarios and building AI drivers that empower a new ecology of mobility and logistics.

Relying on its self-developed U-Drive® platform, UISEE has built a scalable L3-L4 intelligent driving system that meets the need of multi-scenario and high-level autonomous driving.

Product / Service information

Our business mainly includes autonomous driving solutions for enterprise customers, commercial vehicle manufacturers, and passenger vehicle manufacturers. Specifically, we provide:

- (i) Autonomous driving vehicle solutions for enterprise customers;
- (ii) Autonomous driving kit solutions for enterprise customers, commercial vehicle manufacturers, or passenger vehicle manufacturers;
- (iii) Autonomous driving software solutions for enterprise customers, commercial vehicle manufacturers, or passenger vehicle manufacturers; and
- (iv) Autonomous driving vehicle leasing services, which mainly include commercial vehicles equipped with multiple L4 autonomous driving functions for enterprise customers.



WildFaces Technology Limited

Company website: www.wildfaces.ai
Contact no.: (+852) 8216 2219
Email address: adm@wildfaces.ai
Address: Unit 608-613, Level 6, Core C, Cyberport 3,
100 Cyberport Road, Pokfulam, Hong Kong

Company introduction

WildFaces' patented "on-the-move" artificial intelligence (AI)-based analytics system, WildAI, provides video, sound, and smell analytics from moving sensors or cameras on drones, moving robots, and body-worn cameras. These systems have been implemented on numerous government and commercial sites worldwide.

Applications range from anonymised tracking with privacy protection and traffic congestion management to sound and smell analytics.

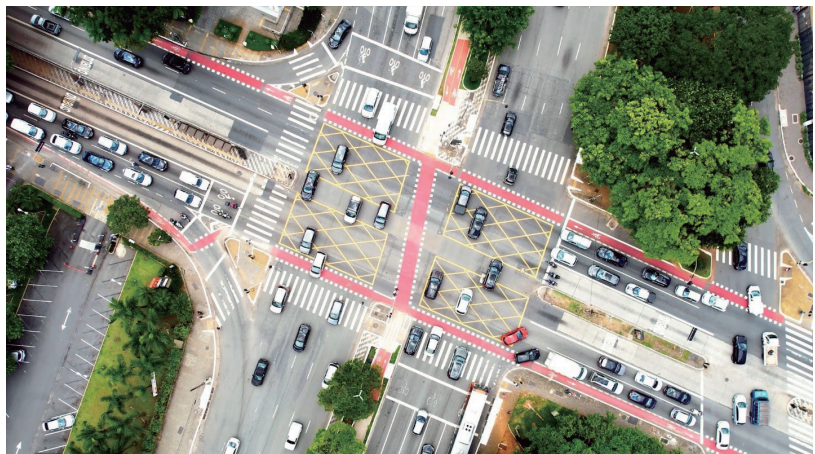
WildAI is infrastructure-light, which requires minimal data training without labelling, deep learning or GPUs. It is computing-light and can be speedily deployed. It operates in real-time even when the sensor is "on-the-move".

Product / Service information

WildFaces' patented Congestion Prediction system can predict possible traffic disruptions by utilizing existing cameras, including moving cameras, based on the continuous analysis of congestion-related precursors, namely sudden slowdowns, vehicle volume, large vehicle classes, numerous illegal parking incidents, pedestrian lengthy crossing times, etc., to allow drivers or electric A unique feature of the technology developed by WildFaces was that its AI systems did not require any Deep Learning which is required by virtually all current AI systems.

This patented technology has achieved several breakthroughs. It comes with a camera-based mapping capability, which overcomes the constraint of traditional GPS systems that cannot provide accurate locations within a 5-meter vicinity. Our system can track objects' locations both indoors and outdoors with an accuracy of less than 1 square meter, even in adverse weather conditions.

WildFaces' AI systems are all based on a practical "Intuitive AI" approach that does not require Deep Learning or power-hungry GPU cards, which can ensure cost-effectiveness and quicker deployment.



Yee Fung Technology Limited

Company website: www.yeefung.com

Contact no.: (+852) 2886 9071

Email address: sales.oversea@yeefung.com

Address: Unit 542A core building 2 phase 1, Hong Kong Science Park,
Pak Shek Kok, New Territories

Company introduction

Founded in 2003, Yee Fung Group is a global leader in automated parking, warehousing, and mobile robotics. For the automotive industry, the company delivers comprehensive automation solutions covering multi-level parking, high-density vehicle storage, robotic parking, vehicle off-line handling, and port transfer, while also providing flexible material handling systems for production lines and logistics warehouses.

Product / Service information

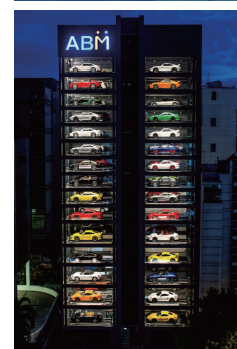
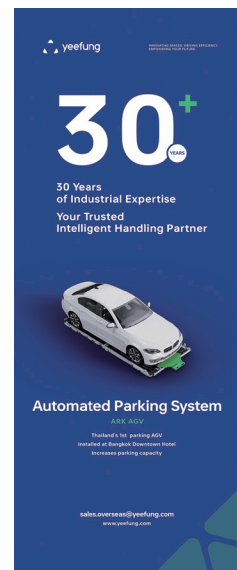
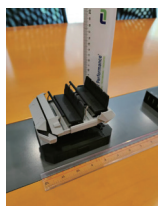
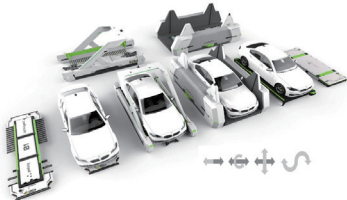
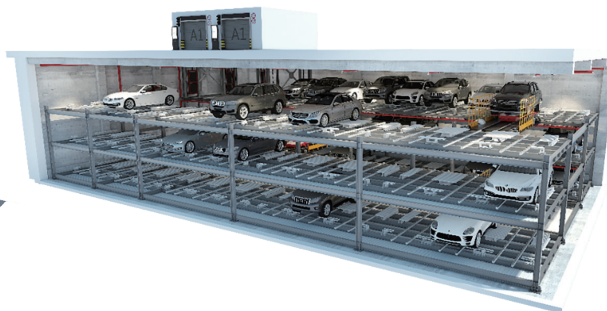
Intelligent Automated Parking Systems:

Smart vehicle storage

Indoor & outdoor robotic parking

Robotic handling for vehicle off-line operations

AGV transportation and car body handling for automotive production lines





Asia Pacific
Connected Vehicles
Industry Association

Asia Pacific Connected Vehicles Industry Association
Room 707, Shui Hing Centre, 13 Sheung Yuet Road, Kowloon Bay, Hong Kong
Tel.: +852 2541 1680
Email: vehiclesconnected@hotmail.com



Hong Kong Productivity Council
HKPC Building, 78 Tat Chee Avenue, Kowloon, Hong Kong
Tel.: +852 2788 5678
Email: hkpcenq@hkpc.org